

GIA FACETWARE™ CUT ESTIMATOR

As a result of more than 15 years of research and discovery, GIA® has developed a scientific method of assessing and predicting the cut quality in round brilliant cut diamonds.

The most exciting and reassuring conclusion of GIA® research is that there is no single set of proportions that defines a well-cut round brilliant diamond. GIA® research has shown that many different proportions can produce attractive diamonds.

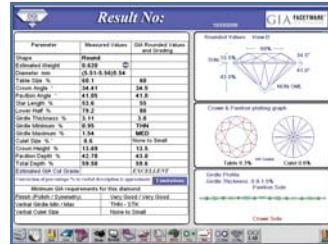
OGI Systems Ltd. products with GIA Facetware embedded will allow manufacturers, dealers, retailers and appraisers to predict a cut grade before their diamonds are sent to the GIA® Gem Laboratory for grading services.

Scanox or Megascope Graders use the GIA® cut grade system in order to obtain an estimated GIA® cut grade.

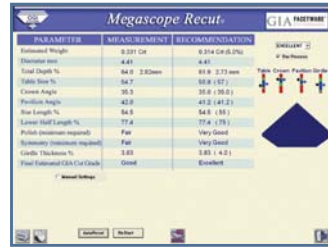
Scanox or Megascope Re-Cut recommend optimal Re-Cut options according to GIA® tables for minimum loss of stone weight.

The OGI Rough systems assist in planning rough diamond cutting in order to gain optimal yield from the rough diamond, according to GIA parameters. They also include a 3D virtual cutting process, an OGI Systems Ltd. patent.

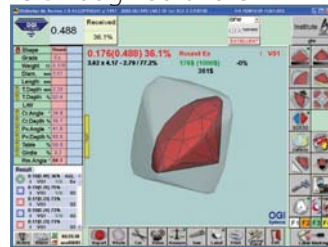
FacetPro Software



FacetPro 3D Recut Software



OGIRough Software



Related products:

- Scanox (Proportion, Planner, Marker),
- Megascope, Megarough,
- OGIMarker®, OGITender®